

The CARES Act – Key Impacts on Churches and Nonprofits

© ECFA 2020. All rights reserved.

1

---

---

---

---

---

---

---

---

### PowerPoint Slides

Download today's PowerPoint slides from your screen in the right hand corner of the GoToWebinar Controls under the Handouts icon.



ECFA Enhancing Trust

Email questions to Webinar@ECFA.org

2

---

---

---

---

---

---

---

---

### Today's Presenters



**Mike Batts**  
Managing Partner  
Batts Morrison Wales & Lee, P.A.



**Frank Sommerville**  
Shareholder  
Weycer, Kaplan, Pulaski & Zuber, P.C.

ECFA Enhancing Trust

Email questions to Webinar@ECFA.org

3

---

---

---

---

---

---

---

---

**"Paycheck Protection Program" Loans/Grants**

*Nonprofit organizations should consider all available types of relief available to them in addition to considering a Payroll Protection Program loan. Some types of aid/relief/loans are incompatible with obtaining a Payroll Protection Program loan or forgiveness of such a loan.*

ECFA Enhancing Trust Email questions to Webinar@ECFA.org 4

4

---

---

---

---

---

---

---

---

**Paycheck Protection Program  
Maximum Loan Amount Step-By-Step Illustration**  
(Note: Illustration would be different for a seasonal employer)

Step 1: Determine the organization's total annual payroll costs as described in the outline for the applicable one-year period for the loan	\$3,614,800
Step 2: Reduce the amount determined in Step 1 by compensation of individual employees in excess of an annual salary of \$100,000	( 58,000)
Step 3: Subtract the amount determined in Step 2 from the amount determined in Step 1	<u>\$3,556,800</u>

ECFA Enhancing Trust Email questions to Webinar@ECFA.org 5

5

---

---

---

---

---

---

---

---

**Paycheck Protection Program  
Maximum Loan Amount Step-By-Step Illustration**  
(Note: Illustration would be different for a seasonal employer)

Step 4: Divide the amount determined in Step 3 by 12 to arrive at average monthly payroll costs	<u>\$ 296,400</u>
Step 5: Multiply the amount determined in Step 4 times 2.5 to determine the maximum loan amount	<u>\$ 741,000</u>

Note: Maximum loan amount is limited to the lower of the amount determined in Step 5 or \$10,000,000

ECFA Enhancing Trust Email questions to Webinar@ECFA.org 6

6

---

---

---

---

---

---

---

---

Expanded Unemployment Benefits

ECFA Enhancing Trust Email questions to Webinar@ECFA.org 7

7

---

---

---

---

---

---

---

---

Deferral of Payment of Employer's Share of Social Security Taxes

ECFA Enhancing Trust Email questions to Webinar@ECFA.org 8

8

---

---

---

---

---

---

---

---

Employee Retention Credit for Employers Subject to Closure or Substantial Revenue Loss

ECFA Enhancing Trust Email questions to Webinar@ECFA.org 9

9

---

---

---

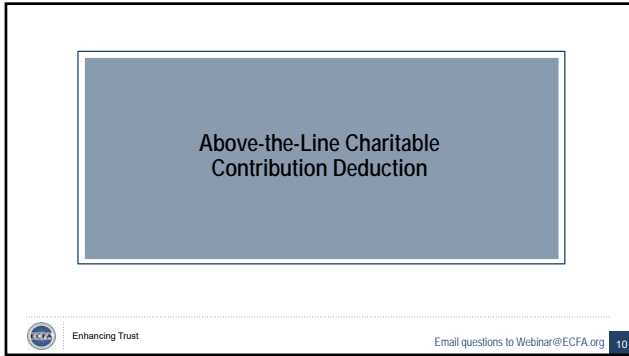
---

---

---

---

---



10

---

---

---

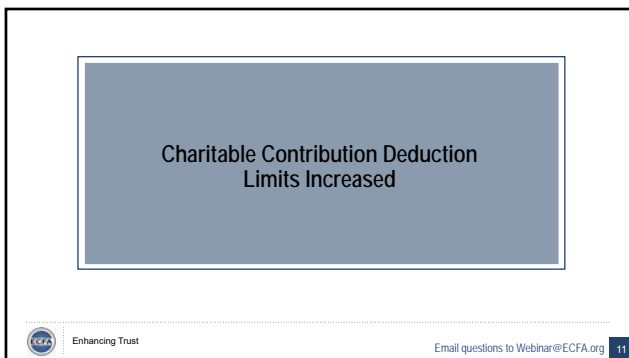
---

---

---

---

---



11

---

---

---

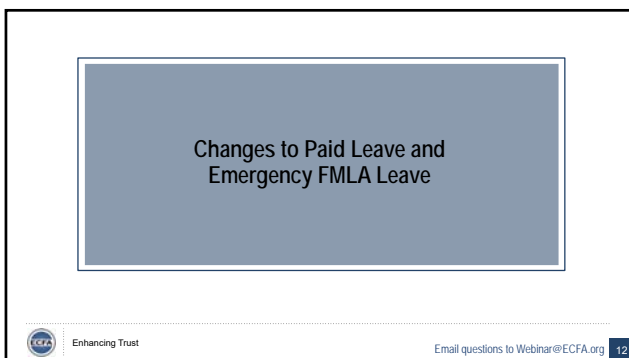
---

---

---

---

---



12

---

---

---

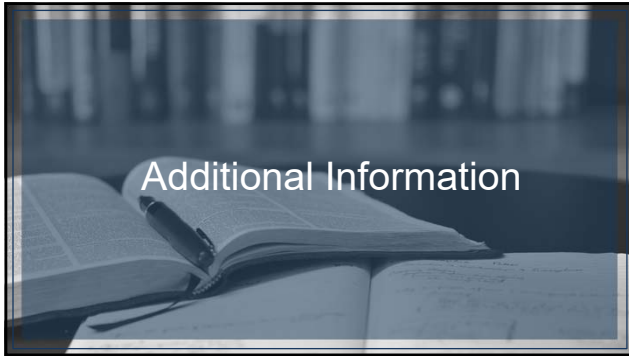
---

---

---

---

---



13

---

---

---

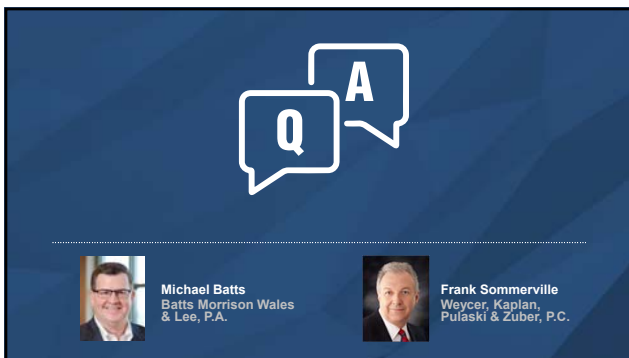
---

---

---

---

---



14

---

---

---

---

---

---

---

---



15

---

---

---

---

---

---

---

---



16

---

---

---

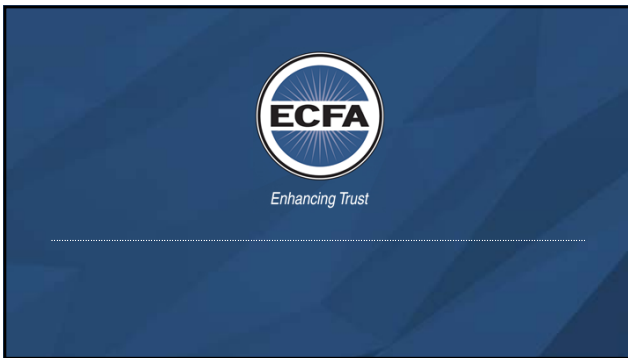
---

---

---

---

---



17

---

---

---

---

---

---

---

---